

## 2008 YEAR IN REVIEW



### INSIDE

Message from the  
Executive Director ..... p. 2  
2008 Accomplishments..... p. 2-3  
2008 Financials ..... p. 4



*This special edition of Open Spaces shows the progress we have made in 2009. As founder and president for its first 18 years and current Board member, I am proud of what the Conservancy has become and the work that we do. With your support, our successes will continue for generations to come.*

*Bill Ailor*

## A MESSAGE FROM THE EXECUTIVE DIRECTOR

I am pleased to present the various accomplishments of the Land Conservancy over the past 12-months. These successes were the direct result of support from our members, volunteers and community partners who provide the creative energy, hard work, and financial resources necessary to have helped us achieve our land preservation, habitat restoration, and community education goals in 2008.

This past fiscal year has been one marked by achievement, with more than 30 acres of new habitat restoration underway, a new and innovative Nature Education Center under construction at the White Point Preserve, and an educational program that reached over 1,500 local students.

Our priorities for 2009 include continuing essential stewardship and restoration activities at the Palos Verdes, White Point, Chandler and George F Canyon Nature Preserves. We will also continue to provide the educational and research opportunities that help foster an understanding of our local environment. Though we reached conceptual agreement in 2008 to add over 200 acres to the Portuguese Bend Nature Preserve, the economy and recent court decisions have delayed what we hope will eventually be a successful acquisition.

As you know, we all face challenging economic conditions in 2009. As you plan your giving to charitable organizations this year, please remember your local land conservancy, where you can see your contributions at work close to home. With your support, we'll continue the work that assures our special open areas on the Peninsula will remain scenic, healthy and intact for today and for future generations.



Andrea Vona  
Executive Director



## Highlights of 2008: Land Stewardship

***As the amount of permanently preserved open space is protected, so does the need for responsible land management — increasing the habitat value while encouraging public access and low-impact uses. In 2008, the Conservancy:***

- Initiated habitat restoration on over 30 new acres of open space.
- Continued maintenance of 1,200 acres of managed land critical to the survival of the rare Cactus Wren, California Gnatcatcher, and El Segundo blue butterfly.
- Collaborated with the PV/South Bay Audubon Society on a five-year study to develop quantifiable data on wildlife responses to restoration at the Three Sisters Reserve, where the Conservancy, with the help of a herd of goats, began to restore 21 acres of habitat.
- Worked with the City of LA Recreation and Parks Department to create a new Nature Education Center at the White Point Nature Preserve in San Pedro. This will be a significant resource center for visitors and area students to learn about the landscape, conservation and ecology of the local area.
- Helped ensure the recovery of the rare PV blue butterfly by restoring the native habitat necessary for their breeding. In 2008, a record number of up to 700 butterflies per day emerged and were released on Conservancy protected habitat.
- Worked with Rolling Hills Estates and The Acorn Group to develop a plan for new educational exhibits at the Nature Center at George F Canyon. We also planted a new demonstration garden displaying native grasses, shrubs and trees.
- Assisted four Eagle Scout Projects in George F Canyon Nature Preserve, each involving over 100 hours of work in restoration, planting, weeding non-native plants and trail clean-up.

## Volunteer Support

***High school students, families, college alumni, and companies helped us maintain and restore open space, donating over 16,000 hours of their valuable time in 2008. Highlights include:***

- Trained 14 new Trail Crew Volunteers for over 50 hours in technical skill and trail design, enabling them to assist in promoting proper stewardship of the Conservancy's 42 miles of protected recreational trails.
- Over 320 young people below the age of 18 participated in 40 Volunteer Days on our nature preserves, removing weeds, improving trails, and planting locally native plants.
- Helped 29 high school Team Leaders develop leadership and restoration skills by training them to manage groups of volunteers at our Volunteer Workdays.
- Recruited over 20 KEEPERS (Keeping an Extra Eye on the Preserve for Environmental Review and Stewardship) each responsible for visiting their Preserve area monthly to monitor, assess, and document wildlife, habitat and trail conditions.
- Worked with Recreational Equipment, Inc. (REI) to sponsor outdoor volunteer work days, and to fund our Volunteer Trail Crew Program.







CSU students inspecting samples.

## Education

**For 20 years, education has been a major Conservancy focus. Monthly nature walks were our first educational activity and this year some 700 people participated. In 1994, we began a program combining in-class and field studies to help students gain a deeper appreciation of our natural environment and in 2008 we visited 76 classrooms, trained 470 parents, and reached over 1,500 children. Other highlights from our educational program include:**

- Scientific research involving over 100 participants in 80 research projects as part of the Research, Education, and Community Involvement Program for the Environment (RECIPE) now in its third year.
- RECIPE's scientific research success led the Alcoa Foundation to provide a second 2-year program grant and funding for the permanent interactive exhibits for the new Nature Education Center at the 102-acre White Point Nature Preserve.
- Matched 40 RECIPE high school students with noted researchers and, through their hard work, won awards, presented a poster at a science conference and many were accepted at prestigious schools, including 2 at Harvard University.
- Added 2 San Pedro schools to the 3rd Grade Program, bringing the total number of schools to 17 that receive Conservancy in-class and field trip lessons on local ecosystems consistent with current academic standards.
- Introduced 81 sixth through eighth grade students from South Los Angeles to the Preserves— most visiting a green space for the first time – through a partnership with the LA Conservation Corps.
- Launched S<sup>3</sup> (Science Students as Stewards) Pilot Education Program to teach earth and physical science standards through hiking adventures and hands-on field experiments with field trips to the Preserves. Trained ten elementary and middle school teachers in the PVPUSD as part of the project.
- Distributed 8 weather stations, funded by a grant from the Major Foundation, to 5 schools, which will enable real-time Peninsula weather data on-line in 2009.
- Encouraged CSU Long Beach Geosciences Diversity Enhancement Program professors, college students, and high school students to visit the Preserves during the summer for geological and habitat research.
- Expanded our Science Advisory Panel, which provides research expertise to the Conservancy and whose members serve as advisors for student researchers, from 30 to 45 members.



4th grader examines local flora on a science field trip.



The Portuguese Bend Artist Colony donates spectacular landscape paintings to benefit the Conservancy. The 2008 Art Collection brought in critical funds to the organization and raised awareness of the Peninsula's irreplaceable beauty. Pictured above, Board member Joe Platnick and his wife Kathryn at the June 23rd Opening Reception.

## Community Support

**The accomplishments we've described are made possible because of the strong support of our community, the many individuals, families, foundations and corporations who gave so generously to the Conservancy. We also appreciate the outstanding community support for our fund raising events.**



The Spring for White Point Home Tour Committee organizes an annual event that raises funds to benefit the White Point Nature Preserve by opening up some of the most unique homes in San Pedro to more than 200 people.



Palos Verdes Peninsula Land Conservancy  
 PO Box 3427  
 Palos Verdes Peninsula, CA 90274

NONPROFIT ORG.  
 U.S. POSTAGE  
**PAID**  
 Palos Verdes Pen.  
 CA 90274  
 Permit No. 232

## OPEN SPACES

*Newsletter is  
 published quarterly  
 by the Palos Verdes  
 Peninsula Land  
 Conservancy*

### BOARD OF DIRECTORS

Bill Ailor, President Emeritus  
 Henry Jurgens, President  
 Elizabeth Kennedy, Exec. Vice President  
 Deena Sheridan, Secretary  
 Marc Crawford, Treasurer  
 Bruce Biesman-Simons  
 Allen Franz  
 Mike Kilroy  
 Susan McKenna  
 Jess Morton  
 Joseph Platnick  
 Anke Raue  
 Jack Smith  
 Jim Staes  
 Bill Swank  
 Ken Swenson  
 Grace Wallace

### STAFF

#### Executive Director

Andrea Vona

#### Office Administration

Hazel Martinez, Administrative Director  
 Christen Kitner, Administrative Assistant

#### Science Program

Ann Dalkey, Science Director

#### Land Stewardship

Lily Verdone, Conservation Director  
 Cris Sarabia, Stewardship Manager  
 Leslie Buena, Stewardship Associate  
 Humberto Calderon, Stewardship Technician  
 Damian Morando, Stewardship Technician Lead  
 Hugo Morales, Stewardship Technician  
 Nely Gonzalez, Nursery Technician  
 Sonia Gonzalez, Nursery Technician  
 Bill Tilley, Construction Manager

#### Development

Robert Ford, Director of Development  
 Louise Olfarnes, Manager of Marketing Communications  
 Mary Lopes, Donor Relations

#### Education Program

Kristina Ellis, Director of Education Programs  
 John Nieto, Education Program Manager

#### George F Canyon Nature Center

Loretta Rose, Naturalist  
 Laurie Morgan, Asst. Naturalist

Printed on recycled paper

## 2008 SUMMARY OF REVENUE & EXPENSES

### REVENUE AND PUBLIC SUPPORT

Contributions	\$725,062
Grants	\$834,631
Special events and inventory sales	\$127,714
Funds released from restriction	\$355,706
<b>TOTAL REVENUE AND PUBLIC SUPPORT</b>	<b>\$2,043,113</b>

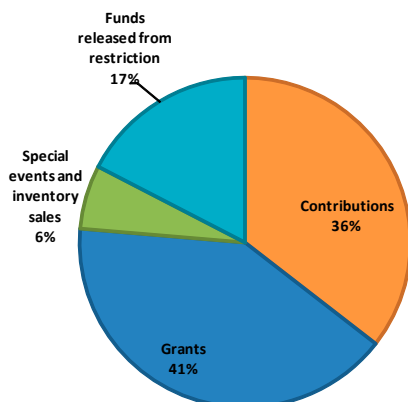
### EXPENSES

Program Services	\$1,667,987
Fund raising	\$103,729
Management and support services	\$138,461
<b>Total Expenses</b>	<b>\$1,910,177</b>

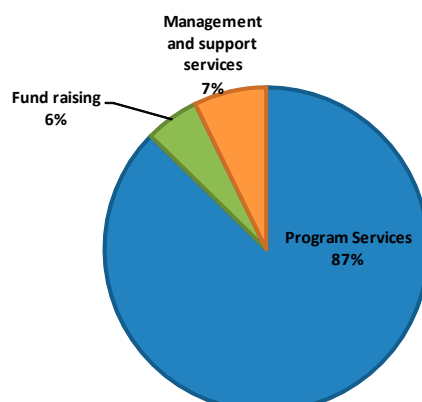
### INVESTMENT RESULTS

Interest and Dividends	\$76,576
Net realized and unrealized gain on investments	-\$273,338

**Revenue by Category**



**Expenses by Category**





**SUNDAY**  
**JUNE 14**

SEVEN DISTINCTIVE HOMES  
FANTASTIC ART AUCTION  
WINE & APPETIZERS  
LIVE MUSIC  
ALL FOR A GREAT CAUSE



ALL PROCEEDS BENEFIT THE WHITE POINT NATURE PRESERVE IN SAN PEDRO.



Spring for  
WHITE POINT  
**HOME TOUR  
& ART AUCTION**

SELF-GUIDED TOUR: 1:00PM – 5:00PM

ART AUCTION & RECEPTION: 4:30PM – 7:00PM

TICKETS: \$50 PER PERSON IN ADVANCE

\$55 PER PERSON DAY OF TOUR

Tickets and more information at [www.pvplc.org](http://www.pvplc.org)  
or call **310-541-7613**.

Day of tour, buy tickets at  
The Vue, 255 W. 5th Street in  
San Pedro. Subject to availability.



Palos Verdes Peninsula Land Conservancy invites you to  
**Smarter Giving for Everyone in  
Challenging Economic Times**

**Edward Long, Esq, Discussion Leader**

**Nationally recognized elder law attorney and non-profit founder**

**Wednesday, May 6th  
4:00 – 6:00 PM**

**Refreshments at 4:00  
Program begins at 4:15**

Ridgecrest Intermediate School, Multi-purpose Room,  
28915 Northbay Road, Rancho Palos Verdes  
FREE Seating is limited, RSVP  
to [rsvp@pvpef.org](mailto:rsvp@pvpef.org) or (310) 378-2278

**Sponsored By**

*Palos Verdes Peninsula Land Conservancy*

*Caring House Peninsula Friends of the Library Peninsula Education Foundation*

*Palos Verdes Art Center The Norris Center for Performing Arts H.E.L.P.*

**A Day at the  
Beach with Monet!**



Saturday May 16th,  
from 10:00 – 12:00  
Abalone Cove  
Nature Preserve  
Ages 2-12 years

The Reserve is located at  
5970 Palos Verdes Drive  
South in Rancho  
Palos Verdes.

- \$25 per family
- Space is limited
- Reservations Required
- Contact: Christen Kitner at PVPLC at (310) 541-7613 or [ckitner@pvplc.org](mailto:ckitner@pvplc.org)





PO Box 3427  
 Palos Verdes Peninsula, CA 90274  
 Telephone: 310/541-7613  
 Website: www.pvplc.org

## SPRING/SUMMER CALENDAR

Join us for these exciting events and volunteer opportunities! Reservations are required for all volunteer work-days.

For information and reservations, call Christen Kitner at 310.541.7613 X 201. Directions and information about our nature walks can be found at [www.pvplc.org/naturewalks](http://www.pvplc.org/naturewalks).

### Save the Date

## 2009

Portuguese Bend  
 Artist Colony

Fine Art  
 Exhibition  
 & Sale

September 19th -  
 October 3rd

Public Opening  
 Saturday, Sept. 19th  
 12 - 4:00 pm at

## Terranea Resort



Tickets Required.  
 For more information  
 Contact:

Christen Kitner at  
 (310) 541-7613

email:  
[ckitner@pvplc.org](mailto:ckitner@pvplc.org)

or visit:  
[www.pvplc.org](http://www.pvplc.org)

Printed on recycled paper

### GEORGE F CANYON EVENTS

**MAY 2**

**JUNE 6**

**JULY 4**

Bird Walk

George F Canyon  
 9AM

Meet naturalist Loretta Rose  
 at the Nature Center. We  
 supply binoculars.

**MAY 2**

**JUNE 6**

**JULY 4**

Hike at

George F Canyon  
 1PM- 3PM

Join our expert guide  
 for a lovely hike. \$3 per  
 person will bring you  
 into a wonderful world  
 of discovery. Please call  
 310.547.0862 for more  
 information.

**MAY 9**

**JUNE 6**

**JULY 9**

Night Hike

George F Canyon

Time to be arranged  
 This hike will bring you to  
 the top of the canyon for  
 a fantastic view of the city  
 lights below. Limited to 20  
 people. Call 310.547.0862 for  
 reservations.

**MAY 2**

Volunteer Workday  
 George F. Canyon  
 Demonstration Garden  
 9AM - 12PM

Celebrate Citywide  
 Community Service Day.

**MAY 6**

Smarter Giving Seminar  
 Ridgecrest School  
 4PM- 6PM

Free. RSVP (310) 378-  
 2278 or [rsvp@pvpef.org](mailto:rsvp@pvpef.org)

**MAY 9**

Volunteer Workday  
 Linden H.  
 Chandler Preserve  
 9AM - 3PM

Help with trail maintenance.

**MAY 9**

Nature Walk  
 Linden H.  
 Chandler Preserve  
 9AM - 11AM  
 Traverse the grasslands,  
 restored butterfly habitat  
 and willow wetlands of this  
 historic preserve. Moderate.  
 RHE.

**MAY 16**

A Day at the Beach  
 with Monet  
 Abalone Cove  
 10AM - 12PM

Ages 2-12

Call (310) 541-7613 or  
[ckitner@pvplc.org](mailto:ckitner@pvplc.org) for  
 reservations

**MAY 16**

Volunteer Workday  
 Nusery  
 9AM - 12PM

Restore PV Blue Butterfly  
 habitat

**MAY 30**

Volunteer Workday  
 Forrestal Reserve  
 9AM - 12PM

Help with trail maintenance.

**JUNE 6**

Volunteer Workday  
 Portuguese Bend  
 Reserve  
 9AM - 12PM

Celebrate National Trails Day.

Sponsored by  
 REI and CORBA

**JUNE 13**

Nature Walk  
 White Point  
 Nature Preserve  
 9AM - 11AM

Admire ocean views and  
 habitat restoration work  
 underway at this 100-acre  
 preserve managed by the  
 PVPLC. Moderate. LA.

**JUNE 14**

Spring for White  
 Point Home Tour  
 1PM - 5 PM

To purchase tickets online:  
[www.pvplc.org](http://www.pvplc.org) or call  
 (310) 541-7613