



The Hills Are Alive ... Blue Butterflies Return

The winter rains and warm spring days are perfect for flowers—and butterflies. This may be a

record year for the most endangered butterfly on the planet. “I think the butterfly is doing lots, lots better this year than last year,” said Dr. Gordon Pratt, who is monitoring the endangered Palos Verdes blue butterfly in recovery. Dr. Pratt, a Researcher at the University of California at Riverside, is a specialist in butterflies. Although it is too early to know for sure how the butterfly will do this year, Pratt has already observed the highest number seen in one day for a long time. “It seems as if we are seeing a boom this year – the ones that should have come out last year are coming out now along with this year’s butterflies.”

The Palos Verdes blue butterfly has been called “the rarest butterfly on earth.” It was identified as a special species found only on the Palos Verdes Peninsula in the late 1970’s. In the early 80’s, the only known locations where it existed were cleared of habitat and the butterfly was thought to be extinct. In 1994 a team of researchers led by Dr. Rudi Mattoni rediscovered the butterfly at the Defense Fuel Supply Point in San Pedro, which receives, stores and distributes diesel and jet fuels for military use in California, Arizona and Nevada.

Since that time, the Defense Logistics Agency, which operates the facility, has funded habitat restoration and a breeding program for the blue butterfly. Major Jason Pike, an entomologist for the DLA who has been monitoring the project this spring, commented, “The military takes its responsibilities for endangered species on its properties very seriously, and DLA is pleased to provide support for the blue butterfly project.”

The habitat restoration on the site, including the propagation of the plants for the butterfly program, is performed by the Palos Verdes Peninsula Land Conservancy under the direction of a consulting restoration ecologist (www.serg.sdsu.edu/SERG). Dan Ryan, PVPLC Stewardship Director, says “it’s exciting to see the butterflies in such numbers this year. We really hope that the breeding program will be a success and that eventually we will be able to reintroduce the butterfly to all of our project areas.”

The captive breeding program for the butterfly is handled by The Urban Wildlands Group, a nonprofit organization “dedicated to the conservation of species, habitats, and ecological processes in urban and urbanizing areas” (www.urbanwildlands.org). Under the direction of Dr. Mattoni, butterfly pupae are removed from refrigerated storage and the butterflies emerge. They are then placed into cages made from netting placed over deerweed (*Lotus scoparius*) plants. The butterflies, who live only about five days as adults, mate and the females lay eggs on deerweed foliage. The eggs hatch into larvae,



which feed and grow on the plant. In the wild, the larvae crawl down into the debris on the ground where they form pupae, but for captive rearing they are collected and pupate in the lab.

The goal of all these efforts is to save this special species from extinction and restore it to health in its native habitat. We hope the apparent success of this year’s season means we’re on the right path.

Breeding cages placed over deerweed plants provide a controlled environment for the butterflies.





Preservation of Open Spaces

A Statement of Purpose

The Palos Verdes Peninsula Land Conservancy is a nonprofit, nonpolitical, public-benefit corporation formed to preserve undeveloped land in perpetuity as open space for historical, educational, ecological, recreational and scenic purposes.

A diverse group of volunteers from the South Bay makes up the PVPLC's managing Board of Directors and its adjunct advisory board. These private citizens have been drawn together by their belief that open space is crucial to the well-being of our community. Land acquisition by the PVPLC is through purchase and gift. In addition to the good will engendered by gift giving, landowners and others who donate land or funds to the PVPLC may realize significant tax benefits.

Open Spaces

A Newsletter Published by the
Palos Verdes Peninsula
Land Conservancy
PO Box 3427
Palos Verdes Peninsula, CA 90274
Office Telephone:
(310) 541-7613
Office Fax: (310) 541-7623
E-mail: info@pvplc.org
Home Page: www.pvplc.org

president's remarks

The Land Conservancy has a yearly retreat where our Board members and staff dedicate a day or a weekend to discussing our priorities and making plans for the next one to three years. This year's off-site is scheduled for mid-April. Over the years, these sessions have proven to be very valuable both in setting our priorities and as opportunities for new Board members to become acquainted with and to participate in the organization.

We usually invite outside speakers to share their insights on timely topics. For example, in some of our first sessions, trainers from the California Coastal Conservancy and the Trust for Public Land related best practices developed by other local land preservation organizations.

Speakers have helped us understand our role and the perspectives of municipalities and landowners. More recently, speakers have discussed how we can raise funds for large acquisition projects and described techniques other organizations have used to increase their effectiveness.

We also use these sessions to develop new concepts and prioritize activities for the coming year. Our Nature Walk program evolved from one of these sessions many years ago. Our Third Grade Education and land stewardship programs have also been priority discussion topics. We developed our strategic plan during a two-day session a few years ago.

One of our topics this year will be board development—the role of board members, the kinds of skills we need to have represented on the board, and the relationship of the board to the staff.

Board development is particularly important as we evolve from a “board members do everything” perspective, characteristic of a young organization with no staff, to a more of a “board sets goals and policies, staff manages the day to day operations” mode. With a yearly budget of over \$1 Million, this type of change has been essential.

A continuing component to these discussions is the support we receive from our talented and dedicated volunteers. We want volunteer experiences to be rewarding for the individual and meaningful for the community, and we are continually looking for ways to increase the involvement of volunteers in our projects and programs.

We will be discussing board development, future projects, volunteer involvement, and several other topics in April. If you have suggestions for things you'd like to see the Land Conservancy pursue in the future, please call our office (541-7613) or send us an e-mail (info@pvplc.org).

I'll give a report on the retreat in our next newsletter.

Bill Ailor
President

PALOS VERDES PENINSULA LAND CONSERVANCY

Board of Directors

Bill Ailor, President
Bruce Biesman-Simons, Executive
Vice President
Mike Kilroy, Vice President
Henry Jurgens, Secretary
Bob Bothamley, Treasurer
Shirley Borks
Don Crocker
Allen Franz
Leah Marinkovich
Ellen Perkins
Anke Raue
James Scharffenberger
Jack Smith
Bill Swank
Warren Sweetnam

Executive Director

Barbara Dye

Associate Director

Andrea Vona

Office Manager

Mary Ellen Richardson

Land Stewardship

Dan Ryan, Director

Arthur Bonner

Balthazar Gonzalez

Jose Gonzalez

Development

Debbie DiBiase, Director

Susanna Klein, Volunteer

Coordinator

Education Program Director

John Nieto

George F Canyon Naturalist

Loretta Rose

Student Representatives

Alyssa Gray, San Pedro High

Alex Lovell, Chadwick

Lindsey Marinkovich, PV High

Kimmie Heintz, PV High

Kylie Dennis, Rolling Hills Prep

progress updates



PVPLC Stewardship Director Dan Ryan looks for blue butterflies at Chandler with Debbie Ruddock from the Coastal Conservancy.

Portuguese Bend Acquisition Effort Progresses

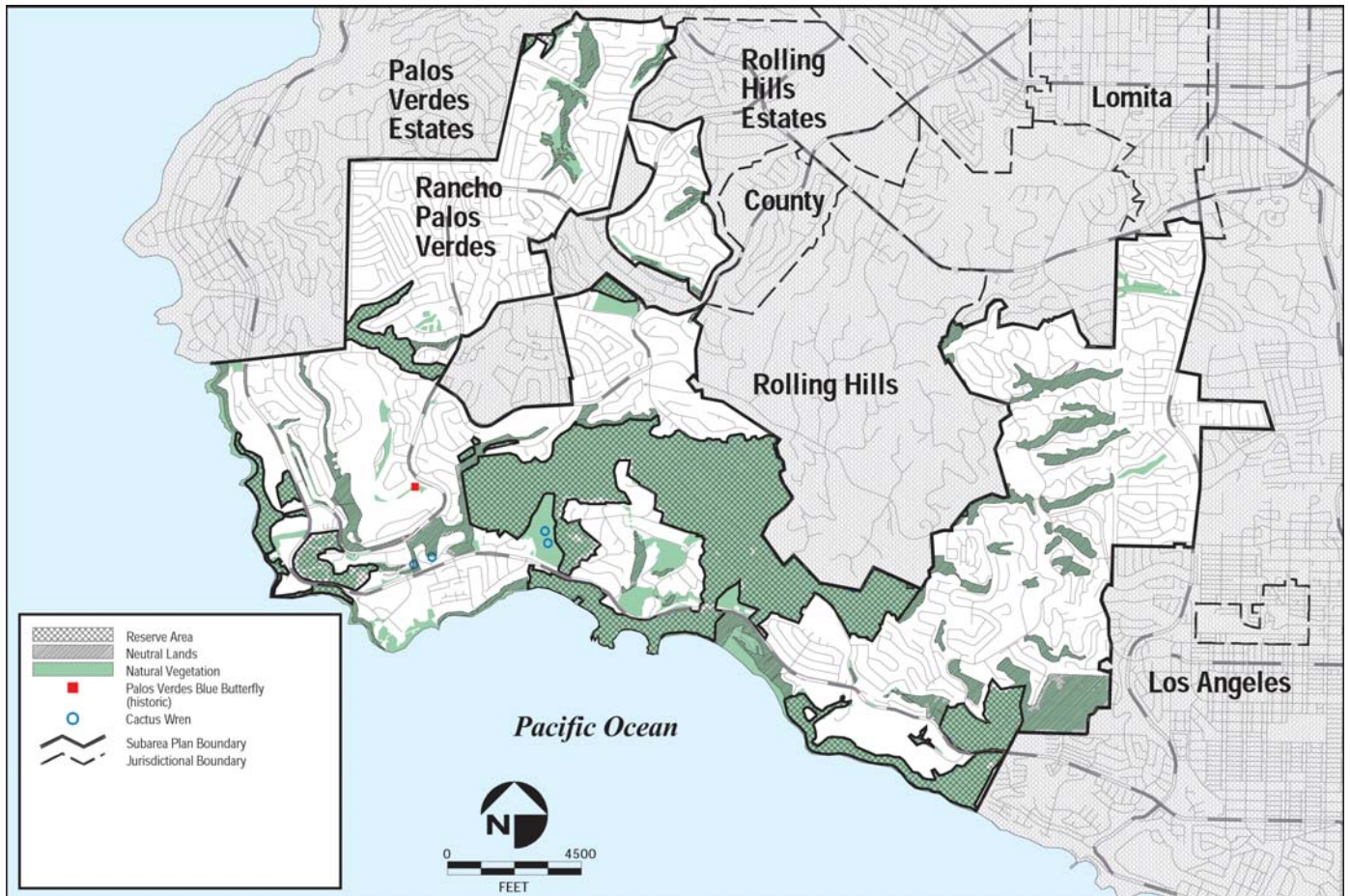
The prognosis remains excellent for our efforts to preserve the remaining open space in Rancho Palos Verdes. A map of the preserve we are working to complete is shown below.

The most recent milestone is the release to the public of the Environmental Impact Report (EIR) on the City's Natural Communities Conservation Plan. Residents have an opportunity to review both the plan (which has been available for review since June, 2003) and its EIR on the Rancho Palos Verdes web page: www.palosverdes.com/rpv. Both documents will be revised in response to public comments and presented to the City Council for approval, probably in June. Anyone who is interested in learning more about these documents and the plans for the preserve is welcome to call the PVPLC office at 541-7613. We'd also be happy to make a presentation to homeowners associations or groups of any kind.

In early March we had a visit from Debbie Ruddock, the South Coast Regional Manager for the California State Coastal Conservancy. The Coastal Conservancy has the responsibility for allocating state bond funds for projects along the coast. She was very impressed by the project, and will lend her support to our acquisition effort.

Appraisals of the properties were prepared for the City several months ago, and these have been forwarded to the State for review. Establishing a value for the properties is a critical step toward allocation and approval of state funding. Although the election of a new governor has delayed processing of our application for funding from state bond measures, our advisors in Sacramento say that we are still first in line for funding. There are others actively seeking funding from this source, so we must remain proactive in this area.

NCCP PRESERVE DESIGN



progress updates

White Point Nature Preserve

Volunteer Days have been filled with people eager to make a difference in this coastal preserve in San Pedro. More than 13,000 native species have been planted on the western side of the Preserve. Soil preparation for the grassland restoration is complete and 28 acres have been hydroseeded with native bunch grasses and wildflowers.

The dominant species in the seed mix is purple needlegrass (*Nassella pulchra*), an upright perennial bunchgrass that once existed in great numbers throughout the State's coastal and valley grasslands. It is a very long-lived species; some estimates are that it may have a 100-year life span. *N. pulchra* grows up to 100 centimeters in height and flowers from late April to May.



Needlegrass has long, graceful stems. It has many fewer seeds than annual grasses because a plant can live for up to 100 years.

Various grassland restoration techniques have been employed at White Point, and by studying the results, we hope to improve current methods of grassland restoration.

The California Conservation Corp (CCC) has begun work on trail improvements, leveling surfaces and adding drainage channels to reduce erosion on existing trails. The CCC engages young men and women in meaningful work, public service and educational activities to assist them in becoming responsible citizens. Thanks to their work, White Point will boast nearly 3 miles of trails including a half mile of ADA accessible trails.

Education Program

The Education Department is having a very successful spring season. We will have conducted 17 sessions of our nature study program at 16 schools by the end of April. The revised nature workbook with its new illustrations has been well received by students and teachers. More than 300 parent volunteers have been trained and over 1360 children will take part in the program and participate in nature walks near their schools. This year, we added our first year-round school, Eshelman Elementary in Lomita. Next year, we plan to add Point Fermin Elementary School in San Pedro.



Forrestal Preserve

The early rains have resulted in vibrant growth of habitat and wildflowers in this preserve. A local Eagle Scout project brought more than 30 volunteers to replant the areas where non-native plants were removed from the canyons and where trails were repaired. We are looking forward to establishing new coastal sage scrub habitat along the trails, and willows and other wetland plants in the canyon.

The Conservancy-led Steering Committee held a Multi-Use Trail Workshop and a public meeting to assist the Committee in making decisions about future trail use in the Preserve. The Committee's recommendations will be submitted to the RPV City Council for approval.

If you have an opinion about the trails at Forrestal, please complete the questionnaire that is available on the Land Conservancy and City web sites. For more information about the meetings of the Steering Committee, send an e-mail to barbaradye@pvplc.org or sign up for the Forrestal Preserve list-serve on the RPV City web site (www.palosverdes.com/rpv/listserver/index.cfm).



A mix of grass seed and mulch is sprayed onto the prepared ground.

progress updates



George F Canyon

The Nature Center has a new turtle – a red-eared slider named Miss Shelly – joining the snakes and tarantula. In the canyon the stream is flowing and the willows are blooming. The views from the bench at the top of the trail are magnificent and well worth the short hike.

Birthday parties at the Center are great fun for kids, including a craft, a visit with the animals, and a walk up the canyon. Night walks, birdwatching and senior strolls are scheduled through the spring. Call the Nature Center at 547-0862 for more information.

Linden H. Chandler Preserve



Blooming bush lupines are silhouetted against the sky.

Wildflowers are blooming in the grasslands, and we hope to see blue butterflies among the flowers this year. The restored riparian area is being maintained and the willows are doing very well.

The Rolling Hills Lions Hill Club is partnering with the Land Conservancy in an Adopt-an-Acre program at the Chandler Preserve. Kambiz Amirshahi, past president of the RHLHC and coordinator for the project, cites the Lions Club's enthusiasm for helping the Palos Verdes blue butterfly as the main reason for becoming involved. The RHLHC will clear an acre of land, plant natives that they raised money to purchase, and maintain the area free of weeds and non-native plants. This unique arrangement will benefit everyone involved, but most of all the PV blue butterfly.



Kambiz Amirshahi in front of habitat at Chandler.

Lunada Canyon Preserve

The habitat restoration completed last year under a grant from the U.S. Fish and Wildlife Service is flourishing. Students from the PVPHS AP Environmental Science Class will be returning to the canyon to weed the two acres of habitat they helped plant earlier in the spring. We have applied for several grants to continue the restoration of the canyon, which is now choked with fennel and other invasives. Our vision is to create a habitat preserve that can support several pair of endangered California gnatcatchers.



Butterflies cling to the stems of the deerweed plant.

DFSP Blue Butterfly Preserve and Native Plant Nursery

Additional habitat for the butterfly has been installed on the slopes. Over 1000 plants were put into the ground between November and February, half of which were the Palos Verdes blue butterfly's food plant.

Since November, the nursery has provided native plants for the Land Conservancy's restoration projects at Lunada Canyon, Forrestal, Chandler, White Point, and the DFSP. In the next few months, we will focus on providing supplemental grass species for the grasslands project and unique riparian species for the canyon at White

Point. Much like the Post Office, the nursery's work never ceases, with work now beginning on propagation for the 2004-2005 planting season.

The Land Conservancy is working with an Eagle Scout to design and build work tables for use at our native plant nursery. The tables will replace our older work areas and provide space for transplanting and storing fragile plant species that would otherwise be on the local rabbits' breakfast buffet.

White Point Project Manager Andrea Vona and Restoration Technician Arthur Bonner admire the butterflies in one of the breeding cages.



membership news

Jack Smith Joins Board



The PVPLC's newest board member, Jack Smith, learned to appreciate open space on the farm in Nebraska where he spent his childhood. When he was fourteen, his family moved to Newport Beach, where he could "swim across the bay to my first job, selling paddle boards."

After obtaining a Masters degree in Business Administration from Pepperdine University,

he spent thirty-five years with Southern California Gas Company, handling responsibilities that ranged from driving the big trucks, to years in management, accounting, strategic planning and marketing. He culminated his career by serving as the Manager of the Alternative Fuels programs, developing natural gas-powered vehicles and the infrastructure to support them, and working with local and national environmental groups.

Jack has always loved boats and has built two sailboats and sailed up and down the West Coast. He lived on a 47 ft. wooden racing sloop on the Orange County coast for six years, until he married his wife Anne, now Vice President for Consumer Services, Mass Markets, for Sempra Utilities. They have one daughter, Christina, a student at Palos Verdes High School and member of the Portuguese Bend Pony Club.

Jack has become an active member of the Peninsula's equestrian community, having served as the District Commissioner of the Portuguese Bend Pony Club, and, now as Vice President of the Palos Verdes Horsemen's Association. He says "I really think that preserving Portuguese Bend is an extremely important goal. I saw what happened to Newport when it got crowded. I saw Orange County explode with development. My ten minute drive to the hardware store became 45 minutes. I see the potential for the same thing to happen here. I want to do what I can to preserve our quality of life in Palos Verdes."

Peninsula Welcomes Russian Visitors

A group of Russian businessmen recently visited the White Point Nature Preserve during a visit to the Palos Verdes Peninsula sponsored by the U.S. Chamber of Commerce. Hosted by the Rotary Club of Palos Verdes, the visit was part of the Chamber's Open World Program, which seeks to build bridges between business people in both countries.

Andrea Vona, White Point Project Manager, discussed the White Point Nature Preserve and our habitat restoration activities with the Russian visitors. "I particularly enjoyed comparing current land management practices in Russia to those of the United States," said Vona. "In Russia most of the property is currently in public hands and there is a move to increase privatization. In the U.S., much of our land is privatized and there is a current trend toward creating areas of public open space."

The Russians were particularly interested in discussing the process of how local organizations can work effectively with government agencies and our experience is working with the City of Los Angeles on the White Point project.



Members of the Rotary Club of Palos Verdes, the visiting Russians and Andrea Vona in the habitat buffer area of the WPNP.



Bill Ailor and wife, Barbara welcome Mariposa Circle members, Allen and Charlotte Ginsburg with Eileen and Jim Joyce.

Mariposa Circle Members Earn Special Recognition

Members of the Mariposa Circle were recognized at a reception at the home of David and Cindy Ruderman on February 22nd. President Bill Ailor, Board members and staff thanked more than sixty of our major donors for their generous support.

Mariposa Circle members receive regular updates on current Land Conservancy projects and are invited to special events and hikes throughout the year. The Mariposa Circle is open to all who donate \$1000 or more a year to the Land Conservancy. For more information, call Debbie DiBiase at 541-7613 ext. 202.

PVPLC Values Volunteers

Volunteers are vital to the Land Conservancy's ability to carry out its mission, receive grant funds, and grow as a dynamic and successful organization. We depend on the many hours of service that volunteers provide each month. Without these hours of dedicated help, the Land Conservancy would never be able to achieve so many of its goals, and we would be far less successful in winning the grants that are necessary to fund our projects.

In fact, many grant applications require that we demonstrate our volunteer support. Grants generally never fund the full cost of a project because grant-makers assume continued, strong volunteer service.

As the new Volunteer Coordinator, I am now organizing and coordinating our volunteer activities and tracking volunteer hours. Based on information we have gathered over the past few years, I have organized lists of volunteers for each of several service areas. When we need help to support a fundraiser or staff an event, I can now call on volunteers from the appropriate list, and together we can get the job done.

I would be delighted to hear from you if you have an interest in specific areas of service—e-mail is the best way, but phone calls work too! I can be reached at 541-7613 ext. 206 or at sklein@pvplc.org.



Susanna Klein

Community Projects

We continue to have great success partnering with school clubs, scouts, and civic organizations on restoration projects. Here are just a few of the projects available at our preserves. If your group is interested, please call Dan Ryan at 541-7613 ext. 203.

- **Adopt-A-Spot** - Take part in an evolving restoration project. Identify your own area, weed, dig holes, plant, and maintain the area.
- **Entryway Landscaping**- Help beautify the entrance to two of our preserves with native plants.
- **Trail Construction / Maintenance**- Help to reconstruct problem areas.
- **Science-Based Projects**- Explore biological processes and help the Land Conservancy at the same time.

membership news

Susanna Klein Appointed Volunteer Coordinator

Rancho Palos Verdes resident Susanna Klein, who joined us as Development Associate last fall, has been appointed our new Volunteer Coordinator. She will be helping us to develop and strengthen our volunteer program.

Originally from the East Coast, Susanna and her husband, John, have recently returned to Palos Verdes after living in Tennessee and New Mexico. They have also spent time living in Japan and England.

As mother to four children, Susanna has many years' experience as a school and community volunteer, and before that she worked as an editor in Washington and New York. Susanna is very happy to be back on the

Peninsula, where she loves to hike the trails with the Sierra Club and the PVPLC.

Volunteer Opportunities

Our volunteers are essential in many ways:

- Providing office support for record-keeping and mailings
- Serving as nature walk leaders
- Educating children in our Third Grade Program
- Planting and weeding our natural habitats
- Helping to plan and carry out special events
- Serving on advisory boards and steering committees
- Providing specialized counsel and services

Join Our Volunteer Leader Program

The Conservancy is starting a new program to educate volunteer leaders who can help with work days at our sites. We are looking for leaders who can organize and direct the many workers who come to plant, weed and clean up our habitat restoration sites. Most work days are held on Saturday mornings and occasional weekday afternoons. If you are interested in planning or attending a short training program for leaders, please e-mail me at sklein@pvplc.org or call 541-7613 ext. 206. I look forward to hearing from you!

membership news

IN REMEMBRANCE

Rodger Paige

given by
Lois and Gordon James
Stephanie Anderson
Jane Funkhouser
Lou Lanier
V.L., Randy and Norma Rowland
Marina A. Kennedy
Robert and Hazel Dorney
Cathy and Kenneth Ragland
Jim and Rita McCoubrey
Bill and Barbara Prassas
Mr. and Mrs. James Bachman
Bruce Biesman-Simons
Anne H. Ruona
Hazel Wallace
Angie and John Schwitters
John and Terry Miller
Denny and Susan Anderson
Inge Husnak
Barbara Dye
Karla Bittner
Robert Silence & Karen Lovy
Gary Steube
Noel Park
Richard and Yvonne Grea
Albert and Brenda Hoblit
David and Betty Schofield
Richard and Anne Brown
Kenneth H. Upton
Dick and Harriet Chase

Luke Wyckaert

given by Veronica M. Wyckaert
James Burger
given by Jeff and Twyla Burger
Vivian D. Eddy
given by V'Etta Virtue
Ted Peterson
given by Karin Peterson
Eugenio and Eufemia Gutierrez
given by the Gutierrez family
Richard Pullen
given by Hope Pullen
Samuel G. Mayes, Jr.
given by Jewell B. Mayes
Mrs. Alma Burger
given by Betty Binding
Paul Penland & Regina Rogers
given by the Penland Family
Kenneth Gerst
given by Irwin and Yola Gerst
Bill Tierney
given by the Chaffey Family
Christopher Larrabee
given by Christine Leigh
John DeWitt
given by Murray & Natalie Berman
Edna Nordstrom
given by Ardys and Don Burt
Jenna Cambilargiu
given by Carl & Barbara Cambilargiu

Dan Torrance

given by Peggy Sawyer
Dorothy Smith
given by Lois Larue
Emerelous Reintjes
given by Elsa L. Morris
Patty Raus
given by Barb Lurie
Mother
given by Larry and Pat Horan
Ray and Maxine Rucker
given by Beth Newton
Robert Coors
given by Betty Strauss
Russell Smith
given by Betty Strauss
Vincent Borcich
given by Leah Marinkovich
William Henry Gettman
given by Leah Marinkovich
Alex Horowitz
given by J. Scallon
Lyn Kovel
given by Rene Nourse
Michael Randall
given by Eric Randall
June Knighten
given by Lynn McLeod
Marjorie Stouffer
given by the Riggs Family

★ IN CELEBRATION ★

Chapin Field

given by Joanne "Scotty" Wuerker
California Native Plant Society
by David Sundstrom
In honor of their 50th wedding anniversary Joanne and Fred Mackenbach
given by Ruth and Dick Lohrer
In honor of his 80th Birthday Robert Friedson
given by Bernard and Mildred Rivo
In honor of their 50th Anniversary Mason and Maria Ashla
given by Sid and Fran Wielin
In honor of their new grand-daughter, Madison Noelle Seager
given by Ray and Susan Seager
Zachary H. Goldman
given by Joel and Arline Epstein, Quadra Foundation
Celebrating 40 years of residence
given by Marilyn Rutherford
In honor of their newest grand-daughter, Paige
given by the Epstein Family



Planned Giving

LEAVING A LEGACY OF OPEN SPACE PROTECTION

As a member of the Land Conservancy, you have already taken a step toward the protection of open space on the Peninsula. Future generations will benefit from the work that you have helped to fund. We realize many of you want to ensure that this work continues well into the future. Planned Giving is an option which benefits the donor by fulfilling charitable and financial objectives and supports the future efforts of the Land Conservancy. The Land Conservancy accepts the following types of long-term gifts:

- **Bequests**—these revocable gifts are the most flexible and simple to give. Bequests include wills, trusts, retirement plans, insurance policies, securities and bank/brokerage accounts.
- **Irrevocable gifts**—although more complex, these gifts provide significant benefits to both the donor and the Land Conservancy. These gifts include charitable remainder trusts, charitable gift annuities, charitable lead trusts, growth and income funds, and donor advised funds.

If you plan to include the Palos Verdes Peninsula Land Conservancy in your will or estate plan, we should be named as: *The Palos Verdes Peninsula Land Conservancy, a 501(c)(3) nonprofit organization, under the laws of the State of California, with principal business address of 916 Silver Spur Road, Suite 108, Rolling Hills Estates, CA 90274. Our tax identification number is 33-0309722.*

We would be pleased to work with you or your estate planner should you have questions or need more information. Please contact Debbie DiBiase at 541-7613 ext. 202.

In Celebration!

Remember family & friends with a gift to The Palos Verdes Peninsula Land Conservancy

**Graduations
Weddings
Birthdays
Anniversaries
Achievements**

Recipients and donors will be specially recognized in upcoming issues of **Open Spaces**

If you have any questions, please contact Debbie DiBiase at 541-7613, ext. 202
ddibiase@pvplc.org



Enjoy a Walk on the Wild Side April 22 & 24

The Las Candalistas annual fundraiser, "Walk on the Wild Side," will be held from 10am to 3pm on Thursday, April 22 and Saturday, April 24 at Rancho Palos Verdes City Hall. The theme for this year's event is

"Our Fair Ladies...In Victorian Times." Costumes, and other events will take you back to Southern California at the turn of the century. For more information, visit their website at www.lascandalistas.org or call 310-798-7499.

Las Candalistas has been a consistent supporter of our 3rd Grade Nature Walk program since its inception in 1995. Over the years, their total contribution to the program has been nearly \$42,000. The Land Conservancy has been designated a major recipient of funds from this 2004 event, so please help them make it a big success!

Spring for White Point Sunday, May 2

White Point Nature Preserve Fundraising Committee

Fourth Annual Fundraiser and Auction, 4 - 8pm



Delicious food and hors d'oeuvres from local area restaurants • Live music by Brian Asher & Harold Greene • Exciting live auction • Silent auction featuring works from local artists • Great raffle prizes

*Don't miss the wonderful selection of award winning wines from South Africa, Chile and Austria, courtesy of **Great Wines International.***

Los Angeles Yacht Club, 285 Whalers Walk
(Cabrillo Marina), San Pedro, CA 90731

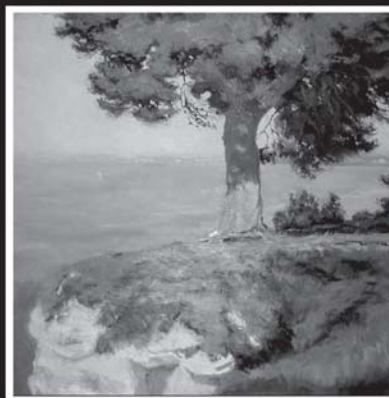
Tickets \$40 in advance, \$50 at the door.

Call Andrea Vona at 541-7613 ext. 204 for information.

upcoming events

Save the Date!

PALOS VERDES PENINSULA LAND CONSERVANCY
FINE ART EXHIBITION AND SALE
Open Spaces: THE PENINSULA AND BEYOND
June 26 — July 30, 2004



Malaga Cove
Plaza Library

**Mark your
calendar
for this year's
exhibition!**

featuring

PORTUGUESE BEND ARTIST COLONY MEMBERS

AMY SIDRANE • KEVIN PRINCE • TOM REDFIELD
STEPHEN MIRICH • DANIEL PINKHAM • VICKI PINKHAM
RICK HUMPHREY • GUEST ARTIST BERNARD FALLON

OPENING RECEPTION

SATURDAY, JUNE 26, NOON TO 3PM

This year, advance reservations are available for a special

Preview Reception & Dinner

Friday, June 25, 2004

MALAGA COVE LIBRARY GALLERY

DINNER AT LA RIVE GAUCHE

For an invitation, call Debbie DiBiase at 541-7613 ext. 203
or e-mail ddibiase@pvplc.org

native plant news

Fire Protection and Native Habitat

With images of the recent terrible wildfires still resonating in our minds, and visions of hillsides of restored habitat for our preserves, it's a good time to take a look at how the presence of native habitat affects the safety of homes in Palos Verdes. The protection of people and their homes is the highest priority for us when we make plans to restore native habitat and manage a natural preserve area. Fortunately, quite a lot of study has been done on the best way to protect homes, and it is clear that we can have both – native habitat and protection from fire.

Fuel modification zones. Maintaining an adequate “fuel modification zone” between structures and adjacent natural areas are critical for minimizing the possibility of wildfires affecting homes. The Los Angeles County Fire Department has a detailed document that spells out its recommendations for maintaining those zones, including recommendations for selecting suitable plants, clearing or thinning vegetation, and irrigating backyard landscaping.

Plant selection. When it comes to selecting suitable plants for landscaping, all of the available resources emphasize that **any plant will burn if there is enough heat and other conditions are right.** Having said that, it is still true that some plants burn more readily than others. The condition of the plant is also very important, since a dry plant will obviously burn more readily than one that's been irrigated by rain or mechanical systems.

Fire prone plants. Plants that ignite readily and burn intensely, known as *pyrophytes* or “fire-prone” plants, typically share certain characteristics. They are dry, have leaves or wood containing volatile chemicals which also make their leaves aromatic, have strong-smelling sap, have loose bark, and/or flame rather than smoldering when ignited. Many of our

most popular landscape plants, along with several coastal sage scrub plants, are in this category. Among the worst are eucalyptus, cypress and pine trees, sagebrush and sages, pampas grass and junipers. They should not be used in fuel modification zones.

Protect your home. The best way to protect a home is to make sure that an adequate fuel modification zone surrounds it. The minimum distance is 100 feet, but in some cases, the Fire Department would prefer up to a 200 foot buffer. Since fire most often burns upward, a larger buffer is

generally required below homes than above them. This buffer can be planted with fire-resistant vegetation (again, no plant is fire proof), including attractive native plants like cactus, saltbush, monkeyflower and bladderpod. Any dead material should be removed, and trees should be well separated from each other.

Nature preserve management. Fire protection for neighboring homes is the highest priority for all of the nature preserves managed by the Conservancy. All existing fuel modification zones are maintained, and we conduct mowing activities on a schedule specified by the fire marshal.

Resources. There are many resources with respect to fire and vegetation, and a number of internet links are listed below. The bottom line is that it is possible to coexist safely with the natural beauty of the Palos Verdes Peninsula.

Barbara Dye

PLANT OF THE MONTH

Lemonade Berry *Rhus integrifolia*

This hardy, drought-tolerant, dark green native bush is very common on the Peninsula. Generally found within canyons on north facing slopes, it produces large quantity of small, pinkish flowers in the early spring that attract lots of bees and other pollinators.

In a garden setting, the lemonade berry does well with little or no water, and if left unattended, it can growth up to eight feet high. It can also be pruned to a smaller size. With irrigation, it can be used in fuel modification areas.

Rhus integrifolia is a member of the Cashew family. One of its distant cousins is poison oak, but fear not, the lemonade berry is quite friendly. It has a lemony coating on its berries, which when soaked in water makes a lemonade-like drink. Sweetened with a little sugar, it's quite tasty.



For more information, visit the following websites.

Los Angeles Co. Fuel Modification Plan Guidelines:

<http://www.lacofd.org/forestry%5Ffolder/pdf/fmpg.pdf>

<http://www.firesafe.com/firescape.html>

http://www.iinc.org/pdf/fire_retardant_plants.pdf

<http://www.ucfpl.ucop.edu/I-Zone/XIV/vegetati.htm>

**Mariposa Circle**

(Donations of \$1000 or more)

Anthony and Beth Aaron
 Bill and Barb Ailor
 Jonathan and Margie Aroesty
 Philip and Geraldine Belleville
 Bruce and Hale Biesman-Simons
 Carole Black
 Rodney and Kyle Boone
 Ardys and Don Burt
 Barbara & Carl Cambilargiu
 Mike and Virginia Cicoria
 Pam Crane
 Don and Mary Louise Crocker
 Dennis and Michele Dahlhausen
 Robert & Joyce Daniels
 Loren and Craig DeRoy
 John and Mary Feyk
 William S. Field
 Robert and Kathy Ford
 Dena and Robert Friedson
 Marylyn Ginsburg
 Barbara and George Gleghorn
 Jerome Gold
 Eloise Goodhew Barnett
 Reed and Nan Harman
 John Wessell and Judith Herman
 Lawrence & Patricia Horan
 Cassie Jones
 Eileen and Jim Joyce
 Henry Jurgens
 Gerald and Jacqueline Kehle
 Dan and Lisa Klerman
 James and Lorraine Knight
 Steve & Janice Kuykendall
 Maude and Aaron Landon
 Las Candalistas
 Dr. and Mrs. Hongpyo Lee
 Elaine, Jeff & Alex Lovell
 Major Family Foundation
 Beth Newton
 Sharon Nolan
 Norris Foundation
 Ralph and Joan Ortolano
 Palos Verdes Rotary Foundation
 Fraser and Ellen Perkins
 Angela and Andrew Pride
 Eberhardt and Dorothy Rechten
 Emery and Emily Reeves
 Curtis and Pamela Reis
 Remax Palos Verdes
 Don and Mary Ellen Richardson
 Jerry and Helen Schaefer
 Robert and Carolyn Schaeffer
 Jim and Tracy Scharffenberger
 Marion Scharffenberger
 Sierra Club of Palos Verdes
 Deena Sheridan & John Spielman
 Diane and Stephen Stewart
 Glenn and Jodie Streeter
 Warren Sweetnam
 Toyota Motor Sales — USA
 Henry Tuttle
 John Vansickle
 Stefan & Mary Jo Wolowicz
 Scotty Wuerker
 Veronica Wyckaert
 Eric and Carol Yamasaki

Patrons(Donations of \$500 to \$999)
 Dorothea Alpert

Bay Cities National Bank
 Beall Charitable Foundation
 Joseph and Linda Bird
 Ruth Boland
 Shirley Borks
 Tina and Bob Bothamley
 David and Phyllis Cannom
 Tom and Barbara Chargaff
 James Cheney
 Janet and Bill Cornyn
 John and Barbara Dye
 Vic and Nancy Edelbrock
 Dirk & Pam Grissett
 Joseph and Gina Lawrence Houchen
 Robert and Olga Jones
 Steven Kratz
 Joann and Kenneth Lehmer
 Gary and Mary Lopes
 Theresa and John Miller
 Mira Catalina PTA
 Noel and Diana Park
 Daniel and Hillary Post
 CA Native Plant Society South
 Coast Chapter
 St. Lukes Presbyterian Church
 Norwood & Elouise Teague
 Pat Trutanich
 Charles Tucker
 The Vaughan Family
 Sidney and Frances Wielin
 Christina Varwig & Robert Wylie

Sponsors

(Donations of \$250 to \$499)
 Stephanie LeBlond and Jack Alden
 Gail and Douglas Allen
 Tom and Mary Anne Alley
 Robert and Clairene Almond
 Kenneth & Bettina Arnold
 Jim and Veralee Bassler
 David and Ann Bauer
 Murray and Natalie Berman
 Dan and Jill Bridleman
 Earle and Derith Casler
 Betty Ciuchta
 Irene Coward
 Dr. & Mrs. Dominic DeCristofaro
 Scott Donnelly
 Al and Kathy Edgerton
 Mary Alyce Elwell
 Ronald and Patricia Forbess
 Leslie and Jeffrey Gold
 Fred & Carol Gregory
 Annette Guerrero
 Frances Hanckel
 Paul and Lynda Heran
 Sidney Hollander
 Frederick and Mary Jo Jackson
 George and Ikuko Kawahara
 Kyle and Diane Kazan
 Ben and Dona Kazarian, Jr.
 John and Cynthia Kondon
 Lois Knight Larue
 Alan and Susanne Lawrenz-Miller
 Richard and Ruth Lohrer
 Mary and Tom Malone
 Greg Maxson
 Sam and Jewell Mayes
 Danna McDonough
 Susan and Dick McKenna
 Frank Merola
 Allan and Mary Merralls
 Douglas and Patricia Patterson
 Robert Z. and Marion Perkins
 Mary Forgione and Tom Politeo
 Quadra Foundation, Inc.
 Vic and Ysilda Quirarte
 Steven and Sally Reiter
 Eileen Ritchie

2003 membership

We recognize and thank the nearly 1400 individuals, families, foundations, and businesses throughout the South Bay and beyond who have demonstrated their commitment to preserving Peninsula open space with their donations in 2003.

We also sincerely appreciate those individuals who donated their time as volunteers on Land Conservancy projects. The success of our education, habitat restoration, and land acquisition programs is directly related to their financial and volunteer support. Our organization and our community are grateful.

W. Jack and Ann Rode
 David and Carole Rowe
 Phillip Rubaloff
 Michael and Laura Salvay
 Dr. and Mrs. Jerald Simon
 Roy and Virginia Smolke
 Peter Somberg
 John Stevens
 Paul and Nancy Tetreault
 Richard and Barbara Trakas
 Mary Waldo
 Katherine Westphal
 Jo Woods
 James and Jennifer Yoh
 Boyd Zack
 Jean Pierre and Wilma Zellner

Associates

(Donations of \$100 to \$249)
 Arleen Adams
 Robert and Sue Adams
 Joseph and Dorothy Agronick
 Albertsons
 Ronald & Phyllis Algra
 Elizabeth Altman
 Mark Ekstrand and Lynne Amano
 Roger and Carolyn Ayers
 R. G. and E.K. Azar
 Bob and Jacki Bacharach
 Brian and Joann Bailey
 Anthony and Deborah Baker
 Ann Muscat and Jack Baldelli
 Phil & Mary Ellen Barnes
 Michael Barth
 Marina Batzke
 Don Norton & Jean Beasley
 Jim and Christy Beggans
 Don and Sue Bell
 Mr. and Mrs. Robert Bell
 Anita Connors & David Bence
 Bennett Landscape
 Jeff and Debbie Berger
 David Bernstein
 Karla and Larry Bittner
 Ron and Judy Blackwelder
 Mrs. Arlene Block
 Pamela and Greg Boboc
 Ross and Jennifer Bolton
 Thomas and Frances Booth
 Jeannette Bower
 Henry and Nobuko Bremer
 Angelika & Fabrizio Brinkmann-Busi
 Alan and Jody Browning

Claire Ealy and Philip Browning
 June Burlingame-Smith
 Robert and Diana Cahill
 James and Jayne Campbell
 Mark Carlson
 Adam and Susan Carroll
 Donald I. Carter
 Alfred and Dolores Cellier
 Debbie Cerulli
 John and Ann Chaffey
 Leon & Nancy Chalnack
 Richard and Carolyn Chambers
 Ricardo Chaparro
 Scott and Maria Chernoff
 Evelyn Chidsey
 Joan & Rowan Chlebowski
 Don Christy
 Luis & Ana Chui
 Rebecca Cicoria
 Donna and Michael Ciminera
 Georgia Claessens
 Dorothy and Cortland L. Clark
 Mr. and Mrs. David Clum
 Helen and Bob Coffey
 Jon and Nancy Collins
 Robert and Mary Jean Combatalade
 Congregation NerTamid Mens Club
 Sean and Rebecca Conlon
 Wendy Cooper
 Barbara and Tom Coynes
 Jack and Joyce Crump
 Dr. Allen Curtis
 Jean Curtis Wells
 Burt and Diana Cutler
 Jeff and Wendy Dahlgren
 Marilyn Dalton
 Jack and Betty Davidson
 Frank and Alison Davis
 Susan Strong Davis
 Raymond and Nancy DeLong
 Emmanuel Delfin
 Roland DeLong
 Ray and Anne Destabelle
 David and Debbie DiBiase
 Megan DiBiase
 Robert and Hazel Dorney
 Lee Dorsey
 Madeleine Drake
 Everett Durfee
 Paul Dusckett
 Bruce and Shirley Edson
 Everett and Marlene Emerson
 Doug and Sheila Epperhart

2003 membership

Jewell Jones and Dave Estep
 Josette Etcheverry
 Lester & Susan Evans
 Garold and Joyce Faber
 James & Carla Farrell
 Ernest Scheyhing & Teresa Ferguson
 Lynn Fernandez
 Susan Finney
 Gary Fletcher
 Darrell Floyd
 Stevie Beitscher and Joseph Ford
 Marilyn and James Forsythe
 Martha Foster
 Allen Franz
 Charlotte French
 Don and Mary Lee Friesz
 Ichiro and Judith Fujita
 Cathleen Fukuwa
 Peter M. Livingston Gabrielle
 Susannah Garcia
 Greg and Jackie Geiger
 Rod and Nancy Gibson
 Bill and Phyllis Glantz
 Mark Goldberg
 Robert and Audrey Goldman
 James and Gretchen Greene
 Bill and Maureen Griffin
 Frank and Shirley Guo
 Eugene & Ana Gutierrez
 Hale and Hale, D.D.S.
 Betsy Lohrer Hall
 Craig and Gretchen Harris
 Claude and Arlene Harrison
 Ann and George Hartmann
 Charles & Ruth Hattersley
 Gene and Kathryn Hauser
 Nancy Utovac and Richard
 Havenick
 Bridget Heller
 John & Celina Henderson
 Hermosa Garden Club
 Carolyn Heyn
 John and Virginia Hicks
 Hilde Hiel
 Howard Higholt
 Kitty and Alfred Hill
 Gordon Hitt
 Bruce and Kaaren Hoffman
 James and Bunny Holwerda
 Linda Honey
 Huang Family
 Debbie Huff
 Michael and Jolie Hughes
 William and Martha Hunt
 Marianne and William Hunter
 Robert & Eileen Hupp
 John & Madge Hussey
 Kim and Donald Inadomi
 Masashi & Teruko Itano
 Richard and Sandra Jacobsen
 Sandra Jaffe
 Gordon and Lois James
 Lois Jester
 Lubo Jocic
 Gary and Kellie Dodson Johnson
 Julie Jones
 Cynthia and Don Jortner
 Marie and Abner Kaplan
 Jack and Lois Karp
 Marilyn and Robert Katherman
 James and Cynthia Killackey
 Jeanne Kirschner
 Bob and Kim Kohler
 Dr. R.W. Kohlschreiber

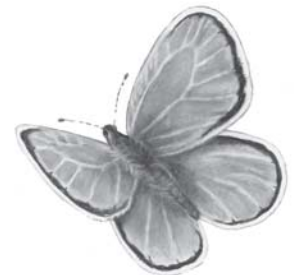
Diana Kos
 Elizabeth and William Kramer
 James Krampert
 Joan Krause
 Judy Krehbiel
 Michael Krotz
 Lynne La Fleur
 Donald and Mae Landauer
 Robert and Sylvia Laxineta
 Allen & Dorothy Lay
 Al Leal
 Linda and Joe Lee
 Christine Leigh
 William Leighton
 Marilou Lieman
 Kim and Patricia Linnett
 Margaret Litman
 Thomas Long
 Karen and Fred Lorig
 Laura Lyman
 Gregory and Barbara Macintosh
 Chris Manning
 Richard and Cheryl Marcz
 Leah and Ron Marinkovich
 Marty's Village Cleaners
 Rex and Karla Masten
 Janis J Masters
 Raymond and Lynn Mattingly
 Robert McConnell
 Ralph McCormick
 John and Barbara McCoy
 Dennis and Donna McLaughlin
 Lorraine McWhinnie
 Joe and Rita Meistrell
 John and Amy Mendez
 Evi Meyer
 Dr. and Mrs. Milton Miller
 Robert and Susan Miller
 Russel and Margaret Moilov
 Sally Moite
 Montemalaga PTA
 Lynn and Anne Monthaven
 James and Mary Ann Morrison
 Margaret S. Morrow
 Hugh and Genevieve Muller
 Richard and Vivien Murtha
 Edward and Dee Ann Myers, Jr.
 D. Paul Nibarger
 Ruben and Deborah Nieto
 Nissan North America, Inc.
 Michael & Marilyn Nitz
 Lisa and Charles Noski
 Jim and Catherine O'Connor
 James & Linda O'Donnell
 Tom and Marian O'Donnell
 Ruth Olson
 Charlene O'Neil
 Richard & Margaret Ota
 Michael Ozurovich
 Barbara Paige
 Hans and Rita Palten
 Trudy Park
 Russell and Christina Parkison
 Lowell Parode
 William and Ramona Petak
 Joe and Jackie Ploen
 Michael and Colleen Plonski
 Debra Pole
 Bill and Bobbie Pomeranz
 Marc Kaiser and Vicki Poponi
 Bill and Barbara Prassas
 Bob & Judy Purvis
 J.D. Quinn
 J.W. Quinn III

Cathy and Ken Ragland
 Donald and Patricia Range
 Rita Rao
 Catherine Ratner
 Jorg and Anke Raue
 Stephen Read
 John and Jeannie Reeves
 Ed & Shirley Retzler
 Heather & Doug Reyes
 Charles and Jennifer Riggio
 Thomas and Jean Roller
 Leann Roque
 Ann Marie Morris & Anthony Rose
 Loretta and Richard Rose
 Karen Winter and Mark Rosenfeld
 Joanne Rotbart
 Cindy and Dave Ruderman
 Howard and Marilyn Russell
 Richard and Donna Russell
 Richard and Joanne Rutgers, M.D.
 San Pedro Garden Club
 Greg and Nancy Sasaki
 Stanley and Beatrice Savellano
 Pamela and Robert Schachter
 Ralph and Gloria Schack
 Richard & Nena Schleicher
 Marcia and Mike Schoettle
 Mildred and Michael Scholnick
 Eric and Diane Schott
 Warren and June Schwarzmann
 Ray and Susan Seager
 Vincent Serhan
 Linda Severy
 Dolores Sharp
 Ship'N Mail Express
 Karen Lovy and Robert Silence
 Lois Skidmore
 Joseph and Irene Slap
 John Small
 Jeanie Smart
 Connie Gayle Smith
 Jack and Anne Smith
 Michael and Jane Smolens
 Gary and Beth Sohngen
 Andy Som de Cerff
 Dick and Terrie Somers
 South Shores Meats
 Murray and Arlene Spector
 Susan Spencer
 Charles Springer
 Diane and Jim Staes
 Richard and Marie Stark
 Douglas and Eileen Stern
 Gary Steube
 Sharon and Ray Stone
 Betty Strauss
 Bau and Lynne Struye
 Jerome and Emily Stuhlbarg
 Rollin and Pauline Sturgeon
 David Sundstrom
 Eva Cicorra and Ken Swenson
 Robert and Ihwa Tang
 Melvin and Norma Taylor
 Robert Taylor
 Susan L. Tittle
 William and Zona Tolliffe
 Geoffrey and Yuko Tong
 Wendy Millet and Rob Trice
 Bob and Phyllis Trujillo
 Don and Peggy Ugent
 Dean and Mia Van Eimeren
 Peter and Miriam Varend
 Jack and Juanita Villasenor
 V'Etta Virtue
 Lawrence Vivian
 Andrea Vona
 Hazel Wallace
 Patricia Ann Webb

Robert and Ann Webster
 Linda and Lowell Wedemeyer
 Doug and Cheryl Wegnes
 Whale & Ale
 Jill and Thomas Wheeler
 Apalla Chopra and Brian Whitten
 Allen & Elizabeth Willard
 Marianne and Stan Wishner
 Rosalie and Jeffrey Wolf
 Jon and Tishya Wren
 JoAnn Wysocki
 Dr. James and Virginia Young
 Richard and Irmasue Zapor
 Betty Zappas
 Peggy and Ben Zask

Supporters

(Donations of \$50 to \$99)
 Robert and Jane Africano
 Pam Ajang, Ph.D
 David Alexander
 Laszlo and Milka Ambrus
 Gloria Anderson
 Keith and Laurie Anderson
 Patricia Anthony
 Bonnie Arnold
 Georg and Mary Ellen Babbe
 Judy Bain
 Kathryn Balale
 Bertram & Verna Balch, Jr.
 John and Victoria Banister



Dick and Kay Bara
 Christina Barber
 Franci Barich
 Kathleen Barker
 Angeline Barnes
 Heinz H. & Tommie L. Barthel
 Karen and Algis Basiulis
 Gloria Bassler
 Cathy Beauregard
 Jean-Francois Beghin
 Dennis and Sylvia Benko
 Blaine and Deborah Beron-Rawdon
 Best 1-Hour Photo
 Elaine and Perry Bezanis
 Arielle Bhumitra
 Lenae Bilski
 Jill Vaden and Steve Bird
 Stefan Blasig
 Steven and Toni Bock
 Yvonne Bogdanovich
 Dan and Pamela Bonawitz
 Tita and Richard Boulger
 Nina Bradbury
 Gretchen Carner and David Bradley
 John and Julie Bradshaw
 Gary Breckenridge
 G.J. Brown
 Aaron and Karin Bruhnke
 Ted and Kay Buzanis
 Bill and Holly Cain
 Ann Morse and Robert Calatrello

Ramona Ganteaume, Stephanie
 Reynea Perez and Fred Callison
 Suzanne Campi
 Christine Campisi
 Anita and Robert Caplan
 Captain Kirk's Inc.
 Michael and Sirpa Carey
 Steven and Malia Carlsen
 Mike Cashon
 Barbara Cassin
 Joan and Tim Castle



Cosimo L. Cataldi
 Chang Chang
 Rick and Susan Chase
 Helene and Mark Chinowsky
 Ella and Raymond Chiu
 Vladimir and Lydia Chobotov
 Chad Christian
 Jackie Clarke
 Bill and Elly Cleary
 Sally and Clement Cobasko
 Anthony and Diane Cole
 Compton Hunting & Fishing Club
 Patricia Condon
 Charles and Dorothy Cook
 Mr. and Mrs. J. Brian Cook
 Stephen Cramer
 Clark and Jean Custer
 Joe and Toni Deeble
 Elizabeth and Francois Denis
 Nina Derby
 Frank Difronzo
 Debra Do
 Neil and Sheri Dodge
 Sam and Jackie Domancich
 Paul and Virginia Doner
 Gary & Barbara Donner
 Martha Ann Barrera and Kevin
 Dorman
 The Durling Family
 Denzel and Helen Dyer
 Debra Dykstra
 Philip Earl
 Elizabeth Echternach
 Arthur Edelstein
 Marilynn and Greg Eden
 Jay & Patricia Edie
 Jill Shoemaker & George Edwards
 Linda and Don Eichhorn
 James Elliott
 William Emanuelsen
 Stephanie Enright
 Barbara Epstein
 David & Rita Evans
 Dick and JoAnn Evans
 Mary-Anne Evans
 Richard and Dorothy Fahrney
 David and Jessica Feldman
 AJ Field
 Mary Rose O'Neill & Thomas E.

Fink
 Joyce Fischer
 Jack and Mary Fisher
 Frances T. Forbes
 Nancy Forbes
 Maureen E. Ford
 Charles, Edessa & Donald Foster
 Debra and Gary Fournier
 Valerie and Peter Fowler
 Robert and Gerri Franco
 Mary Franz
 Cathy French
 Jane Funkhouser
 Jerry and Lorraine Gaines
 Ryszard and Ewa Gajewski
 Thomas and Noel Galbraith
 Marjorie Gallard
 Debra and Joe Galliani
 Marla Meine and Michael Galloway
 Jim and Jan Gardner
 John and Catherine Gebhart
 Tim and Skylyn Gibbons
 Mary Gimenez-Caulder
 Mary Graff
 Robert and Patricia Grant
 Ann Grapperhaus
 Yvonne and Richard Grea
 Kathleen Seixas and Harold Greene
 Richard & Margaret Greenwood
 Jane M. Gruys
 Mrs. Florence Hable
 Janelle Hansen
 Ruth Hanzlik
 Helmut and Frances Harder
 Michael and Ann Harder
 Brian and Margaret Harrison
 Chris Harrison
 David & Barbara Hart
 Dean & Gloria Hartwick
 Carol and Michael Hashiro
 Mary Lou Hayden
 Ann Marie and Jay Hebert
 Joanne and Angel Hernandez
 Rene and Nina Herrera
 Robert and Catherine Hicks
 Cleve Hildebrand
 William and Virginia Hilker
 Heather Himelwright
 Stephen and Ann Hinchliffe
 Melinda Hines
 Albert and Brenda Hoblit
 John and Ellen Hocking
 Bob Aisley and Carol Holben
 John and Phyllis Holzman
 Laura and Lewis Holzman
 Linda Howat
 Alan and Daisy Hsu
 Carol Ann and Bill Hughes
 John and Jean Hyde
 Wesley and Debbie Iguchi
 Don Ershig and Irene Ing
 Brigit Irish
 Paul Isel
 Lita Jacoste
 Nicholas Jaksic, D.D.S.
 Rassler James M.
 William & Christine Jameson
 Dale Jenkins
 Paul Johanson
 Allan and Anne Johnson
 J. Kevin Jones
 Jim and Jane Jones
 Keith Jones
 Gene and Mimi Kalland
 Joan and Tim Kelly
 Bernard and Janice Kenner
 Barbara Ann Kinnard
 James P. Kitzmiller

2003 membership

Garwood and Jo Kleinhenn
 Eleanor and Bill Knox
 Robert and Janice Kollar
 Jane and Dors Koplik
 Alison and Robert Kral
 Kathleen and Richard Krauthamer
 Claude and Anna La Febre
 Douglas and Kim Larson
 James and Sheila Larson
 Esther and Joseph Lavachek
 James & Colleen Lee
 James and Victoria Lee
 Vera LeVeque
 Pete & Miriam Levonian
 Emil and Barbara Lichina
 Jon Lieb
 Kelly & Ed Limberg
 Marvin and Marilyn Litvak
 Greg Long
 Barbara & Mark Lurie
 Robert and Margaret Luty
 Ruth and Roger MacFarlane
 Peter Mand
 Dennis Mari
 Tony and Vince Marich
 Meryl Marks
 Gary and Gretchen Marlotte
 Thomas O. Marsee
 Walter and Florence Marshall
 Betty Martin
 Howard Martin
 Monica Martin
 John Mascola
 Karena Massengill
 Don and Sandy Matsuura
 Bill and Sherry May
 John and Ann McBride
 Lenita and Robert McCallum
 James and Rita McCoubrey
 Dolores McGrath
 Shannon McIntyre
 Julia and Brooks McKinney
 Lorraine and Hugh McKinney
 Jeffrey C. McLellan
 Mike and Maureen Meadows
 Paul Tung and Christine Mei
 Carol Midford
 Robert and Elaine Miles
 Doris Miller
 Hal and Nell Mirels
 Fenton and Marianna Mitchell
 Richard L. Mitchell
 Dr. Noah Modisett
 Simmie and Marcia Monroe
 James and Lois Moore
 John and Carmen Moore
 Elsa Morris
 Drs. Carl & Eva Muchnick
 Craig and Pang Mueller
 Charles and Winona Murray
 Ingrid Neat
 Negri Foundation
 Susan Nowinski
 Theodore and Ann Nye
 John Ohara
 Minoru Ohkuba
 Sandra and Roger Orman
 Albert and Susan Owens
 Pacific View Dry Cleaners
 Drs. Beverly and Richard Palmer
 Greg and Cathy Pass
 Rudolph and Jean Pearl
 Barbara Peirce
 Eve Pericich
 Beverly Pernel
 Dr. and Mrs. Carl Perry
 Jerry Perry
 Frank and Melanie Poturica
 Carl and Frances Price
 Marilyn and Kenneth Prindle
 Rebecca and Charles Rannells
 Mali Cheingpratoom & Robin Reilly
 Irma and Herbert Remstein
 William and Virginia Ritchie
 Riviera Garden Club
 J. Bernard and Mildred Rivo, M.D.
 Lilja Rizzo
 Bill and Catharine Roberts
 Jennifer Roberts
 Ernest and Eda Mae Rogers
 Peggy K. Roland
 Art and May Romek
 Robert Roskos
 Melinda & Edward Ruddy
 Robert and Lois Rupert
 Cynthia Rustanuis
 Eugene E. Ruyle
 Dan Ryan
 San Pedro Surf & Sport
 Peggy Sawyer
 Jerome and Carolyn Say
 Deborah Schaeffer
 Carol Schallau
 Alan and Sandra Scharff
 Jonathan and Anne Scheffler
 Vicki and John Schoenfeld
 David and Betty Schofield
 John and Angie Schwitters
 Joanne and Kevin Scoville
 Marilyn Sears
 Seidel Family
 Ralph Semien
 Ann Shaw
 Susan Sheridan
 Harshad and Bharti Sheth
 Charles and Jean Shriver
 Bernard Shyffer
 Derald and Ann Sidler
 David & Andrea Simmons
 Wayne and Terree Sloan
 Doug & Carla Smith
 Alice and Edward Snyder
 Elwood & Marie Sollom
 Robert and Margaret Soranno
 Barbara Spadafora
 Marcia Spiegel
 Jeniffer McMullen and Steven Squire
 Urs and Therese Stahl
 Chris Stavros
 Steve Stavros
 John & Gay Stodder
 Angela Stuart
 Joseph and Aviril Swartz
 Bart and Kathy Tendick
 Donald R. Thibodo
 Michael Thiel
 Sylvia and Dale Thompson
 Clark and Georgia Thurber
 Beryl Tilly
 Brian and Neysa Tipich
 L.A. Tomon-kai
 Ivan and Jody Tournat
 Mark Towns
 Vytautas and Karen Tozer
 Mutlu and Gulgun Ugur
 Dr. Reinhold Ullrich
 Ardys and Steve Van Sicklen
 Thomas Villiger

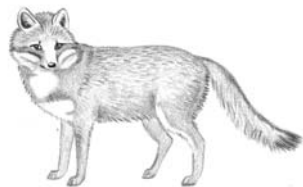
2003 membership

Claudette Vogelsang
Wachli Family
Bryan and Cathy Weaver
Roberta Weaver
Conrad and Elizabeth Wedberg
Don and Beverly Weihe
Dennis and Joyce Welsh
Dennis and Rosemary Weyrauch
Heather White
Mitch and Jody White
John & Linda Whitson
Lois Wickham
Peg and Les Wilde
Scott and Nancy Wildman
Sally Wilhelm
Carla Williams
Veronica Williams
Yveta and Richard Williams
John and Patricia Winkler
Ted and Bonnie Winters
Jerry and Anne Wittels
Mary Leanette Wolfe
Robert Wolfe
Ralph and Risty Wood
Frederick and Beverly Workmon
Jim and Carol Zumwalt
Thomas and Nancy Zusi

Members

(Donations of \$35 to \$49)

Dwight Abbott
Glenous A. Absmeier
Bobbie and Richard Ackley
Jean Acree
Jerry and Jeanette Adams
Andrea Adleman
Don and Dianne Alexander
Rute Alves
Barbara Alvine
Rachel Ambrose
Dennis W. Anderson
Jim Angone
Deri Antrim
Wendolyn E. Arnold Family
Nancy and Mark Aston
Virginia Bacon
Bob & Marilyn Baker
Namele & Steven Baker
Marvin and Gertrude Barab
Adrienne Barnard
Terry Bass
Santanu Basu
Rita Bayer
Elizabeth Becker
Dr. Pauline Beecroft



Ray & Alice Bensch
Dr. Richard and Andrea Berkson
Jane Bettwy
Milton and Mildred Birnbaum
Harlan and Rebecca Bittner
Ralph Black

Dragisa D. Blagojevic
John Blandford
Don and Ann Boucher
Douglas and Betty Bovee
Judy Bradford
Lydia Brady
Marlene Breene
Stephaniie Brito
Arthur and Sara Brown
Ginger & Gary Brown
Ellen Brubaker
Eugene and Margaret Brull
Juanita Bryson
Michael Buckley
Elizabeth Burns
Sharon Butler
Carolyn Cahill-Asher
Robert and Mary Calvert
Jill R. Carlton
Thomas and Marie Carr
Margorie Carter
Stuart and Patricia Chalfin
Judy Chan
Virida Chappell
Henry & Erika Chary
Mary Chunko
Dolly Cincotta
Melissa and Robert Clifford
Janice Cofer
Burton and Charlotte Cohen
Joan Connor
Stanley and Johanna Corbett
William and Candice Cueto
Virginia Cummings
Sue Cutler
John & Patti Danielson
Jan and Cliff d'Autremont
Carol Davids
Cleo Davidson
Barbara Davis
Diana Davis
Sally Kinsey and Robert Day
Betty and Mitchell Dazey
Richard and Joanne De Luca
Frank and Merry De Lucia
Ted and Anna De Roos
L.M. Dennen
Dolores Dijulio
Robert and Patricia Dilligan
Brynnie Dippell
Kathleen Doll
Zelda Donin-Green
Robert Doughty
Ann Du Puy
John and Maureen Duffy
Kenneth and Ruth Duke
Laurel Duval
Paul Elkins
Patricia Ericson
Kenneth and Frances Evans
Mr. & Mrs. Daniel Falcon
Kathleen Falk
Richard Farrar
Robert Farrell
Bill Fawell
Erica Ferro
Mr. and Mrs. Chad Fester
Dr. J.Z. and Marilyn Finklestein
Cora Fischer
Susan Fogelson
George and Gail Fong
Ian C. Forsyth
Walter and Georgene Foster
Frederick and Carment Fowler

Anne Fox
Carol & Joel Foxman
Inez Foye
Bruce and Mary Franklin
Pamela French
Joan Friedman
Ruth Fuller
Susan Bower and Francisco Gago
Catherine and Dennis Gardner
Dolores Garren
Ron and Susan Gastelum
Bob and Mona Gifford
Jerome and Kathleen Glikzman
Art & Lorraine Goldman
John and Katie Gonzalez
Yoga Bindu and Roseanne Good
Edward Wolfman & Susan Goodlerner
Manley Goodspeed
Antoinette Guerrero
Doug Gummerman
Frank and Amy Hagen
Pearl Hanback
Timothy Hand
Harriet Hart
Ruth and T.J. Hasley
Pete & Polly Hathaway
Florinda Hawkinson
John and Virginia Heinrich
John & Holly Henebry
Otto Henke
John and Marion Heron
John and Marjorie Hill
Judith Hilton
Everett and Christine Hinkley
Doug and Vicky Hoffman
James and Joan Hogan
Winona Horowitz
Stanley Horton
Cordelia and Warren Hwang
Karen Jaconi
Judith James
Julian and Lisa Jimenez
Andy and Patricia Murphy Johnson
Donald Johnson
Patricia Johnson
Richard Johnson
Paul Jordan
Midori Kamei
Joyce and Roger Kaplan
Alex Katz
Lorrie Kazan
H. Cecelia Keech
Christy Kelly
William Kenah
Annette and Jerry King
Donald M. Kisner
George Kivett
Shirley Kline
James and Phyllis Knopke
Beverly and Harlan Knudson
Mike and Fran Koerner
Harold Koletsky
Sarah Konstan
David Koontz
Paul Kratz
Joan & Sam Kraus
David and Linda Kuntzman
Alyse Laemmle
William Lama
Robert Laman
Thomas Lang
Donnis Lantz
Nancy Leonard
Hanny and Marcel leRutte
Virginia May Levanas
Mary and Joseph Lindorfer
Jerry Lingel
Martha Longacre
Ms. Janis A. Lukstein
Leslie Anne Lukka
Robert Lusian
Dorothy MacLellan
Mike and Florence Madani
Bill & Cathy Maikisch
Bill & Mary Malcolm
Melissa Mannila
Sandra and Jack Mardesich
Timothy and Sandra Marshall
Vincent & Marion Martelli
Wesley and Barbara Martyn
Mildred Marx
Bill and Jacky Mason
Estelle and William McArthur
Lizbeth McDannel
John and Dianne McDonald
Sandra and Kenneth McKivett
John and Florence McTaggart
Danny & Lisa Meliota
Gerard and Mary Melling
Millie Merrill
Mary Ann and G.E. Mevers
Matthew Miles
Elone Miller
George and Louise Mills
Marilyn Montenegro
Robert and Megan Moore
Jeanne Morgen
John and Sandra Murdock
Robert V. Murphy
Andrew Neuhart
Edward and Blanche Newhall
Lorraine & Michael Norris
Margery Norris
Stanley and Janice Nowinski
Toni O'Donnell
Kurt and Ilse Oetiker
Lorraine O'Grady
Janet Oyama
Betty and Victor Paieda
Archer and Bernice Parham
Sharron Parke
William & Patricia Parker
Lynda and Harry Petru, Jr.
Jack and Mindy Pharris
Marydith Piepenbrink
Daniel and Vicki Pinkham
Ralph and Janet Porter
Vanessa Poster
Daniel Prosek
Donald and Margaret Queitzsch
Edward and Irene Rall
Loretta Britsch and Andrew Rein
Russell Richer
Mildred Rockey
Bob and Sibylle Roessler
Olga Roje
Mary Ross
Norma Rowland
Ron & Heather Rudolph
Patrick T. Rumsey
Lisa Ryder
Jane and Kanji Sahara
Elizabeth and Kevin Sala
Ken and Seta Saunders
Anne, George and Max Schmid
William and Ilene Schmidt
Major Douglas and Gia Schuetz
John and Eda Seaver
Josephine Secakuku
Margaret Seydel
Judy Shaffer
John and Martha Shannon
Brian & Nancy Sheps
Steve Shorr
Richard Sigler

Richard and Jennifer Sittel
 Steve Skale
 Bernie and Marcia Slotnick
 Rebecca Smeltzer
 Frances Smith
 Hal and Janet Smith
 Murray Smith
 Herb and Joan Stark
 Richard Stark
 Albert and Kay Stephenson
 Lynne and Richard Stern
 Ivan Stevenson
 John and Debbie Stinson
 Patricia Lynch and Ronald Stolte
 Sally Strehlke
 Jules Streisand
 Jean Strickland
 Scott Strong



Margaret Jean Sullivan
 Michael and Julie Sulman
 Paul Suzuki
 Joseph and Eileen Tabares
 Carl and Patrizia Taylor
 Michael Tierney
 Shirley and Eugene Turner
 Laurraine Tutihasi
 Niesje Van Heusden
 Don and Lois Vannorsdall
 Joseph and Amy Viola
 Bertina Vona
 James Walsh
 Susan and Thomas Walsh
 Sharlene Waszak
 Takao Watabe
 Wayfarers Chapel
 Ruth and Stiles Wegener
 John and Marilyn Weiker
 Patricia Weimer
 Joanne Cucheran White &
 Robert White
 Judy Willis
 Stuart Wilson
 Winston Family
 Julie and Paul Winter
 Barbeur Wise
 Mark Wolschon
 Patricia Wright
 Louise Wykes
 Wendy Yen
 Marion Yoklavich
 Jennifer Zivkovic

Other Donors

Edgecumbe Family
 Vuoso Construction
 Miriam and David Ackermann
 Lorin & Janet Aird
 Frank and Irene Anderson
 Peter and Antoinette Angelini
 Donald Armstrong
 Marvin and Sheila Asroff
 James & Rosetta Bachman

Joseph and Laura Baer
 Barry S. Bair
 Larry and Roxane Bakerjian
 Louise Glynn Barr
 Robert Klein and Jane Bechle
 Sandra and Wilhelm Behrens
 Scotty and Debbie Bell
 Elizabeth Biggins
 Betty Binding
 Stephenie E. Blakemore
 Robert Bobich
 Josephine Braco
 George Bradbury
 Karen and Jim Brennan
 Robert and Helen Brown
 Jessica C. Burruss
 Wilson and Constance Butte
 Jerry and Joyce Cannon
 Mark and Monica Capalia
 Joseph and Jeanne Carrier
 Christine Carrillo
 Pongsin Choe
 Sheri Clewis
 Major and Marthe Cohn
 Kathleen M. Collins
 Robert and Elizabeth Collins
 Rev. Thomas Cooper
 Pat and Kathleen Costantini
 Robert and Bonnie Craig
 Marjorie Crandall, Ph.D.
 Julia and David Crockett
 Sunnie Cullings
 Carol Damico
 Carolyn Davis
 Doris Davis
 Janine Davis
 Cheryl Dawson
 Doug De Roy
 James and Freda Deane
 Audra Deveikis
 Marsha Dollarhide
 Roger Dudley
 Gary and Shari Efron
 Jeanine Eldar
 Josephine Evarts
 Tina Evers
 Robert & Marsha Exley
 Patricia Farrell
 Bennett & Krista Fidlow
 Steven Fishman
 John and Dorothy Flood
 Anthony and Elena Fortunato
 Robert and Mary Lou Franck
 Robyn C. Friend
 Phyllis Furman
 Soledad Garcia
 Irwin and Yola Gerst
 Marcella Gleason
 Steven and Susan Gold
 Marijan Grgas
 Ronald Hale
 Lillian and Dale Hanner
 Denise Hardwick
 William and Brenda Hargrave
 James Hayashi
 Eufemia and Gregory Hilger
 Randy Hillier
 Teresa and Larry Hoffman
 William and Terrye Holcomb
 Peggy and Chuck Howell
 George and Jerri Hurst
 Inge and John Husnak
 Jim Illson
 Gerrie & Steve Jantzen
 Paul and Emma Jenkinson
 George and Mildred Jones
 Jack and Betty Jones
 Marina Kennedy

2003 membership

Rosa Kestelman
 Michael Kilroy
 William King, Jr.
 Cindy R. Koch
 Muriel Koeller
 Edward and Theresa Kumor
 Muriel Lafferty
 Yukie and Andrew Landisman
 Charles A. Lanthiez
 William and Rosemary Latimer
 Brenda Laube
 Joanne Soohoo Lee
 Byrle Lerner
 Bella and Wen-Kuan Lin
 James & Patricia Mack
 Mark Malinski
 Tom and Carol Manchester
 Antonia March
 Norma Marich
 Arthur Marshall, D.D.S.
 Jo Ann Mauceri
 Ayers K. McCowan
 Mary McDougall, M.D.
 Ronald & Pamela McNutt
 Sean and Elizabeth McPherson
 William & Lori Meistrell
 Jo Ann and Bruno Michetti
 Alan Miller
 Ann M. Mitchell
 Jun Mori
 Eunice Morita
 Victoria Mouradian
 Michael and Alice Natalizio
 Mark and Sylvia Nena
 Sumako and Dave Nishinaka
 Samuel and Joanne Osofsky
 George and Mary Papps
 Mr. & Mrs. William Peirce
 Douglas and Sheila Pell
 Tom Penland
 Mark and Anne Pepys
 Scott Perry
 Karin Petersen
 Adrienne Phillips
 Ritchie and Pearl Phillips
 Quentin Pizzini
 Myrna Plost
 Mary Ann and Thomas Price
 Tracey Murphy and Hope Pullen
 Betty L. Rall
 Joyce A. Randolph
 Marcia B. Reed
 Frances Roberts
 Steve and Marion Robinson
 Anne and C.J. Ruona
 James and Pamela Sattler
 Paul Schlichting
 Eugene Schmidt
 Howard & Sherry Schneider
 Leonard L. Schneider
 Richard and Martha Schwartz
 Eileen & Mel Schwartzburg
 Diana Seerdsma
 Paul and Joan Seide
 Judith Senff
 Michael and Bonnie Shannon
 Marybeth Sharp
 Shirin Madani and Alan Kent Smith
 Thomas & Elaine Smuczynski
 Saul & Madelaine Sokolsky
 Sharon Solari
 Theodora Sonnichsen
 Peter and Janet Stenzel

Marie Stofila
 Marie E. Stofila
 Linda and Rex Tam
 Angela Tang
 Katsumi and Itsumi Tanimura
 William and Arlene Thomsen
 Patricia Tierney
 Mary Toth
 Kev & Susan Toumaian
 Betsy Treynor
 June Uharriet
 Paula and Michael Ungar
 Adam Walch
 Robert Waldeck
 Harry and Esther Wallman
 Suzanne Warner
 Nan Werley
 Kathryn and Edward Wickham
 Nancy Wilson
 Jeff and Marianne Winters
 Arvel and Carol Witte
 Chris and Anne Wong
 C.L. and Marilyn Wyman
 Krista Yachechak
 Judy and John Yamashita
 William and Jeanne Yinger

In Kind Donors

Automated Binding & Mailing Co.
 Biesman-Simons Architecture
 Bike Palace
 Bolton Engineering
 Brigante, Cameron, Watters &
 Strong, LLP
 Angelika Brinkman-Busi
 ColorGraphics
 The Connoisseur
 The Corner Store
 Curved Space Creative Inc.
 Great Wines International
 Mia Natsume
 Natural Landscapes / Tony Baker
 Palos Verdes Bicycle Center
 Palos Verdes Chamber Players
 Palos Verdes Florist
 Paul's Photo
 Pidgeon Cove Outfitters
 Think Bistro
 Paurvi Trivedi



*Illustrations were created by
 Holly Gray for the PVP Land
 Conservancy Nature Notebook
 for 3rd Grade Naturalists.*



Palos Verdes Peninsula Land Conservancy
PO Box 3427
Palos Verdes Peninsula, CA 90274
310/541-7613

NON-PROFIT ORGANIZATION
U.S. POSTAGE PAID
Palos Verdes Pen.
CA 90274
Permit No. 232

MAY 2
Volunteer Day
PVPLC Nursery
9am-Noon

Help with plant propagation in our nursery at the Defense Fuel Supply Point in San Pedro. Enter the gate at 3171 N. Gaffey St.

Spring for White Point
2pm - 5pm

Support the White Point Nature Preserve at this fun neighborhood event and silent auction.

MAY 8
Nature Walk
Lemonade Berry
9am - 11:30am



Park along the street at the south end of Crenshaw in RPV near Del Cerro Park.

MAY 22
Volunteer Day
White Point
Nature Preserve
8am-Noon

Help us plant native plants and weed last year's plantings. 1600 Paseo del Mar in San Pedro.



Spring Calendar

Join us for these exciting events and volunteer opportunities! For more information call Volunteer Coordinator Susanna Klein, 541-7613, ext. 205, or e-mail her at sklein@pvplc.org.

MAY 27
Volunteer Day
Forrestal Nature
Preserve
9am-Noon

Help remove non-native plants. Meet at the end of Forrestal Dr. in RPV.

JUNE 5
National Trails Day
Join the PVPLC and REI to help improve trails at the Forrestal Preserve.

JUNE 12
Nature Walk
Malaga Dune
4pm - 5:30pm



Meet at the east end of Via Tejon cul-de-sac in Malaga Cove.

JUNE 17
Golf Tournament
Los Verdes Golf Course

Enjoy a great day of golf, banquet and prizes at this fundraiser to help preserve open space. Call Sharon Nolan for information and reservations at 377-5253.

Volunteer Day
Chandler Preserve
3pm - 5pm

Help us weed wildflower grasslands and plant willows.

JUNE 26 - JULY 30
Fine Art
Exhibition & Sale
Malaga Cove Plaza Library. Sponsored by the Portuguese Bend Artists Colony.

JULY 10
Nature Walk
White Point Nature
Preserve
9am - 11am

Park in the Preserve or along Paseo del Mar in San Pedro.

AUGUST 14
Nature Walk
Ken Malloy
Regional Park
9am - 10:30am



Visit a lake that is the last of the South Bay sloughs just north of the intersection of Vermont and Anaheim Streets.

OCTOBER 3
Save the Date!



Mile Long Picnic
Fundraiser &
Photo Contest
Now is the time to start taking pictures for this year's Photo Contest!